

**YAMAMOTO**

# Powered Air Purifying Respirator(PAPR)

## **LIFE SAVER**

# New Face Shield!

**National Assay**

合格番号 第 TP98号

LS-360  
ルーズフィット形  
フェイスシールド  
大風量形、PL1、B級

## Wide view! Wide protection area!

- Double structured frame makes your maintenance work easier.
- Increased durability of shield and less dust accumulation on the product.

specification	LS-360	
	Inhouse standard	Measurement (average)
DOP particle penetration rate	More than 95.0%(PL1)	98.8%
leakage rate	Less than 5%(B Class)	0.70%
Minimum required flow rate	More than 135L/minute(High volume flow type)	151L/minute
Flow rate range	138L~190L/per minute	144L~175L/minute
Hose connection strength	More than 50N	128N
Noise	Less than 80dB	70dB
Nominal operating time	More than 8 hours	9.2 hours
Weight	Less than 2.5kg	1.9kg



### LS-360;H1SNM

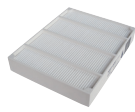
Clear Shield type for dust environment



### LS-360;W2SAM

Welding shield type with shade #1.7

#### Contents of Blower unit construction

BLA-550K  
Blower unitInside of  
BLA-550KNMF-500K  
Mechanical filterSPF-200  
Spatter protection filterBA-L10  
Lithium ion battery

#### Accessories

BC-L1  
Lithium ion  
battery chargerDA-L1  
charger  
adaptorKL-531  
Flow rate  
tester**YK YAMAMOTO KOGAKU CO.,LTD.** Safety,LASER Protective Equipment & Optronics Dept.

25-8, Chodo-3, Higashiosaka City, Osaka 577-0056, JAPAN

TEL : 81-6-6783-1101 FAX : 81-6-6788-7393

<https://www.yamamoto-kogaku.co.jp>E-mail : [sales@yamamoto-kogaku.co.jp](mailto:sales@yamamoto-kogaku.co.jp)